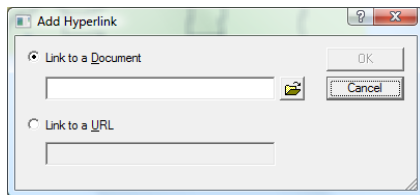
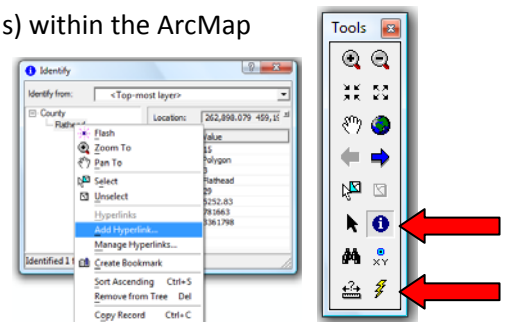


Hyperlinking

There are many features within ArcGIS that allow users to extend the capabilities of the application. One such feature is called hyperlinking. Hyperlinks allow users to access documents (all types including images, movies, spreadsheets, presentations, as well as others) or web pages related to the features. Hyperlinks provide additional information about features to people who will be using your maps with ArcGIS.

Hyperlinks can be added to any vector layer (points, lines, or polygons) within the ArcMap environment. For this exercise we will take an existing ArcGIS map and add hyperlinks. To begin, select the “Identify” tool from the tools palette. The identify tool can be used to click on individual features within the data view and pull all of the information from the attribute table for that feature. For example, the window to the right was generated by ArcMap using the identify tool. From the identify window one of the many things you can do is add a hyperlink. To add a hyperlink, right click on the feature name in the left frame and a drop-down menu appears. Select “Add Hyperlink” for the choices. A new window appears asking for a document path or



a web address. To link to a document, click on the browse folder icon and navigate to the file to be linked. To link to a URL, click on the radio button and add the web address to the cell. Once the document or web address is added you can access the content by using the hyperlinks tool found in the tools palette. The hyperlink

tool is shaped like a bolt of lightning and is only active if there are hyperlinks established within the open ArcMap project. To access hyperlink content click on the hyperlink tool to make it active. Once you click on the hyperlink tool, those features that have hyperlinked content will appear with blue highlights. Click on a one of the highlighted features and the content will open in the default application for the selected file.

Additional Information

There can be several hyperlinks for one feature. To do this simply repeat the steps above and add additional content. Once the content has been added and you click on the feature with the hyperlink tool, a new window appears with all of the available hyperlinks. Choose one by clicking on one from the list and the content will be opened in the default application.