



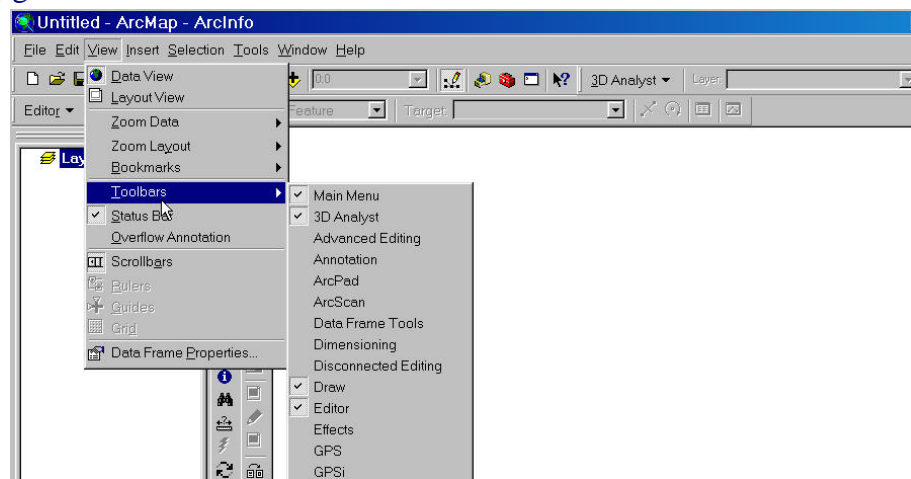
GIS Skill Builders



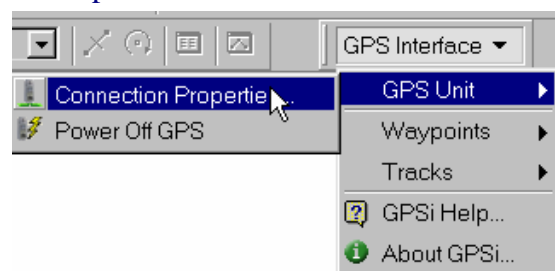
GPSi Extension for ArcGIS

The GPS Interface (GPSi) extension for ArcGIS allows Garmin-brand GPS users to download waypoints and tracks and upload waypoints directly to and from ArcGIS. The steps in using the extension are as follows:

1. Make sure that you have the GPSi extension installed. It does not come standard with ArcGIS. You can download it at <http://arcscripts.esri.com/details.asp?dbid=12749>. Follow the installation instructions that come in the download.
2. Connect the cable to your GPS and the serial port in the back of your computer. Turn on your Garmin GPS unit. Open ArcMap.
3. In order to use the extension, you need to add the GPSi toolbar to your ArcMap environment. To do this, go to 'View – Toolbars' and click on GPSi.



4. The GPSi toolbar will appear detached from the rest of the ArcMap User Interface. If you click your mouse on the right side of the toolbar and hold and drag it, you can move it and dock it anywhere in ArcMap.
5. From the GPSi menu, go to the Connection Properties Screen. This will establish a connection between your GPS and the extension.
6. Once a connection is established, you can download or upload waypoints and download tracks. To download a waypoint, click 'Waypoints – Download Waypoints'. A new window will open that shows the downloaded points. If you want to save all of the points to a shapefile, click the 'All'. Otherwise, you can click to the left of the points that you want to download.
7. After selecting the points for downloading, hit the 'Save' button, give the file a meaningful Name and save it in your working directory.



window