



Adding Data to an Attribute Table

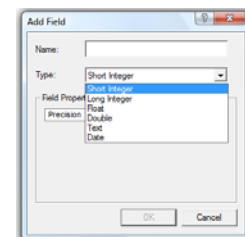
Attribute tables hold a collection of data specific to locations on the Earth's surface. Additional data can be added to an attribute table to make the information more useful in ArcGIS. For this exercise, an existing shapefile will be modified by adding additional fields to the attribute table in order to extend the usability of the file.

The image on the right shows an existing attribute table typical of an attribute table generated from a GPS download into ArcGIS. The table has eight separate fields (columns), each with information gathered by the GPS when the point was captured. Each of the fields can be sorted in an ascending or descending fashion by right clicking on the heading. Fields can also be deleted by right clicking on the heading and selecting "Delete Field" from the drop-down menu. Searches can also be performed on the data by clicking on the option button at the bottom of the attribute table.

FID	Shape	IDENT	LAT	LONG	Y_PROJ	X_PROJ	COMMENT
0	Point	009	46.232788	-113.678222	228929.797104	278021.034468	21-JUL-07 7:07:21PM
1	Point	010	45.682883	-111.087117	160474.407285	476407.393249	23-SEP-07 6:56:07PM
2	Point	011	45.6714	-111.043467	159153.063378	479781.402516	24-SEP-07 3:41:42PM
3	Point	012	45.7038	-111.040467	162747.635204	480085.833221	24-SEP-07 4:05:29PM
4	Point	013	46.868055	-113.990817	300724.17475	258001.780739	26-APR-08 10:17:16AM
5	Point	Big Hill	46.646128	-114.452534	278236.955491	221326.358511	18-FEB-08 11:37:59AM

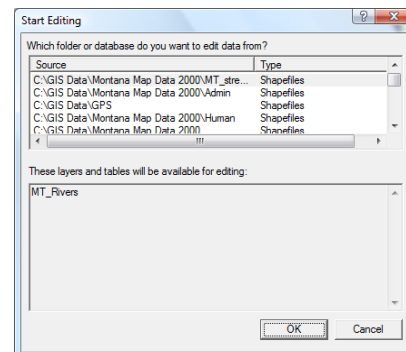
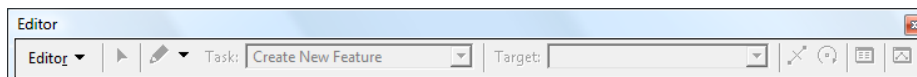
Adding Additional Fields

Additional fields can be added to the attribute table by clicking on the option button at the bottom of the window. From the pull-down menu click "Add Field" and a new window will appear (see image to the right). Give the new field a name and then select the type of field. For example, if the field will hold descriptive data select text, if the field will hold numeric data select short or long integer depending on the size of the numeric values. For this exercise select text. Next, designate the length of the field and then click "OK". A new field is generated and is ready to accept data.



Editing Layers in ArcGIS

In order for data to be editable in ArcGIS a new tool must be used to turn on the necessary feature. To do this, click on "View" and then "Toolbars" from the drop-down menu. Select "Editor" from the secondary drop-down menu and a new toolbar appears in the ArcGIS window. Dock the toolbar in an area where it is easy to access. Next, click on the "Editor" button and select "Start Editing". By clicking on the start editing option, this allows the attribute table data





to be modified. A new window appears asking you to identify the shapefiles to be edited. If you have multiple shapefiles in your table of contents you may need to click through the files in the new window to determine which one to edit. Once you have selected the correct file, click OK. The selected file can now be edited by the user.

For this activity, new data will be added to the attribute table. Open the attribute table from the previous section. Double click in the cell where the new data will be added. Type in the new data and hit the enter key to go to the next cell. Continue this process until all data has been added. To complete this activity, go back to the editor toolbar, click on the "Editor" button and select "Stop Editing" from the drop-down menu.

MMENT	Environmen
7:07:21PM	
6:56:07PM	
3:41:42PM	
4:05:29PM	
10:17:16AM	
11:37:59AM	
3:09:00PM	

The newly added data can now be used for performing queries and other analysis, just as you would with other attribute data.