

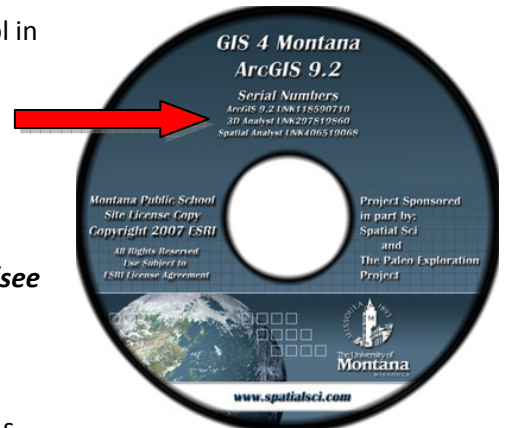


Installing ArcGIS 9.2

The GIS 4 Montana initiative is a State-wide K-12 license for ArcGIS, made available free of charge to Montana’s public schools through an agreement between the SpatialSci Project, The Paleo Exploration Project, and ESRI. Every K-12 public school in the state of Montana has the option to capitalize on this program that includes the latest ESRI GIS software.

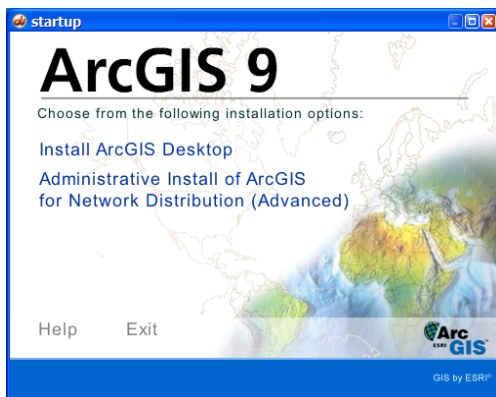
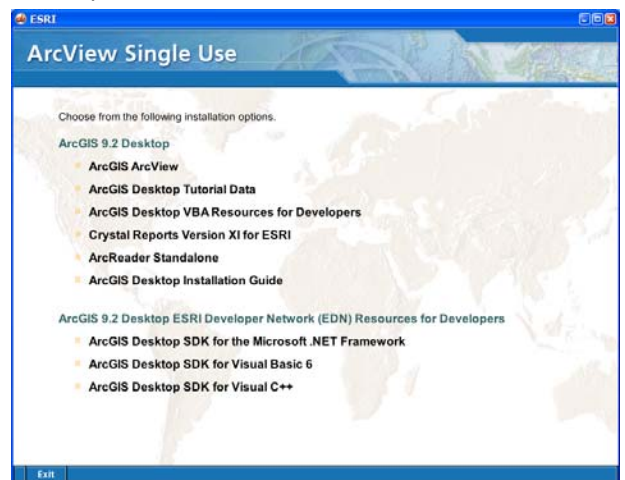
Before you begin

The ArcGIS 9.2 software is easy to install if you follow the steps listed below. Before you begin, copy the serial numbers from the DVD cover (see picture to the Right). You will need these numbers for the registration process explained later in this document.



The DVD is designed to AutoRun once you insert it into the DVD drive. As the DVD spins up a screen like the one to the right should appear. A list appears giving you the option to install many different components of the ArcGIS software. The ArcGIS ArcView option is the option you should choose. This will install the complete ArcGIS program (after you install the ArcGIS ArcView program you can always come back to this menu and install other components of the software (this window will stay open after the software is installed so you can come back to it after the ArcGIS install). For example, you may want to install the tutorial data.

Once you click on the ArcGIS ArcView option, a new window will appear asking you to choose between a desktop install or a network install (see image below). Unless you are trying to install this from a network drive and you have administrative rights on the network, we recommend selecting the “Desktop” option. By selecting this option all of the software components needed to run the software will be copied to the



hard drive of the computer. This option provides the best configuration for running the software without issue. Once you click on the desktop option a series of pop windows will appear asking you to accept the agreement, the desired installation type (select complete, in order to install the extensions), along with other information about where to copy the files and such. We recommend sticking with the default locations identified by ESRI. This will assure fewer problems when running the program. The file copying

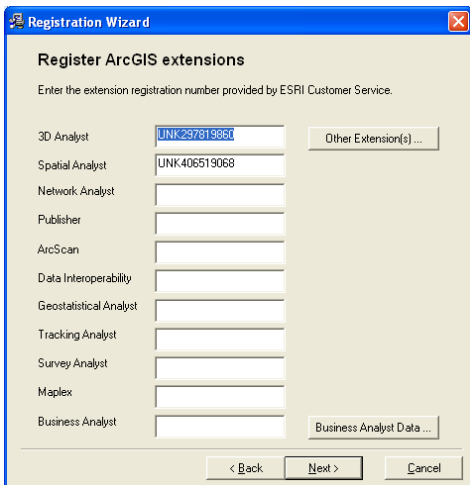
process could take several minutes depending on your computer speed. Be sure the software install process is complete before running other apps on the system. A new window should appear once the install is finished indicating the installation was successful; click finish.

A new window will appear asking you to register the software. The software will not run until it is properly registered. Click on the “Register Now” button and it will take you to a new window. Make sure the “I have installed ArcView and need to register the software” radio button and then click on next. Make sure the “Register now using the Internet” radio is checked (you will need an active internet connection to complete this next step). Click next and fill in the registration information for your school. Notice you cannot proceed to the next screen until you enter all of the required information.

Note: If you have several machines you are installing to it may be easier to register via email. Once you have registered via email with ESRI, an authorization file will be sent to you and you can copy that to all machines.

Click next and you will be required to fill in additional information including information pertaining to your industry and your role within. Fill out the required information and click next. A new window will appear asking for a registration number. You should have copied the numbers from the disk earlier in this tutorial (if you have not, eject the DVD and copy the numbers down now). Enter the ArcGIS serial into the registration cell and click next. If the next button is not available, reenter the registration number. If it still isn’t working, pull the disk from the DVD drive and reenter the registration number.

A new window will appear asking if you want to install extensions at this time. The statewide site license includes two extensions, 3D Analyst and Spatial Analyst. These extensions expand the capability of ArcGIS. We recommend installing them at this time. If space is an issue, you can always return to this



menu and install the extensions at a later date. Click on “I have a registration number for one or more extensions” and then click next. Enter the registration codes for 3D Analyst and Spatial Analyst found on the DVD cover and click next (see screen to the left). Another screen will appear asking you if you would like to tryout other extensions. You can either try other extensions at this time or not. When you have made your selection, click next. A window will appear that monitors the registration process. Once the authorization file has been copied to your computer a screen will appear indicating the registration process was successful. You may now run ArcGIS and use the 3D Analyst and Spatial Analyst extensions. Happy GIS’ing.

If you have other installation questions, please contact Jeff Crews at jeff@spatialsci.com.