

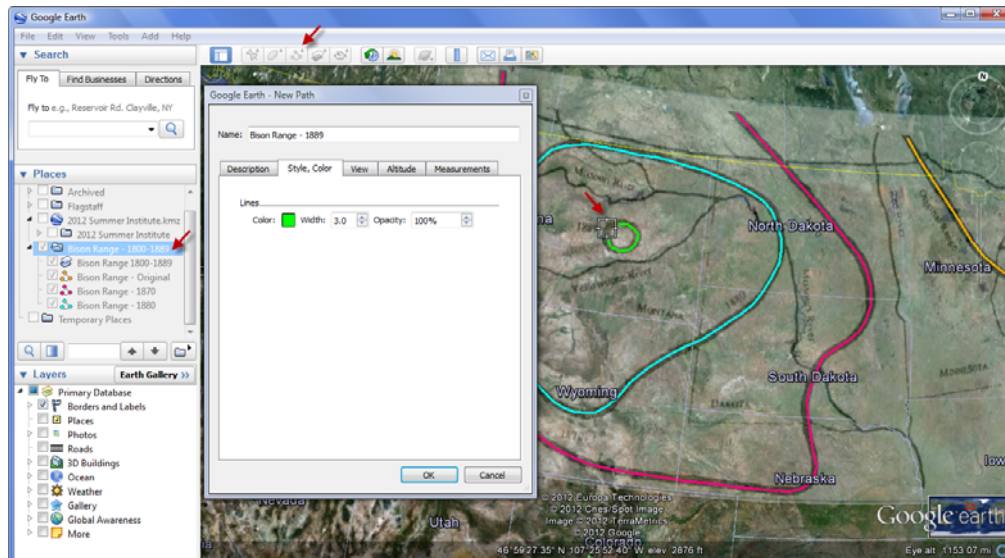


Working with Google Earth – Adding Paths & Labels

Creating Paths

In this example, we will redraw the bison range boundaries using the image overlay as a template. These paths will replace the overlay.

1. Click on the Bison Range folder in the **Places** panel. Note: If you forget to click on the folder before you create the line, you can drag and drop the lines into the folder like you did with the overlay.
2. Select the **Path** tool from the Google Earth menu bar.
3. Enter a descriptive name in the **Properties** box that appears.
4. Click on the **Style, Color** tab in the **Properties** box.
5. Change the line color by clicking on the **Color** box.
6. Set the **Width** and **Opacity** for the line.
7. Leave the **Properties** box open to allow you to create the line. The **Properties** box can be moved out of the way by clicking and dragging the top of the box.



8. To trace the lines that show the extent of the bison range as represented on the Bison Range map image overlay, click on the starting point for the line you would like to create.
9. Continue tracing the line by clicking at intervals along the line. Click at close intervals to create a smoother line.

Note: You can adjust the line by clicking on points in the line and dragging them to make the line more closely fit the Bison Range map, but this may be more difficult to do. It is best to try to create an accurate line, rather than adjust the line later.

- When you have traced the extent of the line, press the **OK** button in the **Properties** box.
- Create a new line to show the extent of the bison range for each year represented in the map image overlay. To create the additional lines, follow the instructions again, but choose a different color for each line.



Note: Lines and Polygons can be added and formatted in the same manner.

Adding Labels to the Paths

- Click on the Bison Range folder in the **Places** panel.
- Select the **Pushpin** icon from the menu bar.



- Enter the label you would like to use in the **Name** field of the **Properties** box.
- With the **Properties** box open, drag and drop the **Pushpin** to the location where you would like to place the label.
- Open the **Style, Color** tab in the properties box.
- Click on the **Color** box to change the color of your label and icon.
- Click on the **Icon** box to choose the icon you would like to use.
- Adjust the label and icon size in the **Styles, Color** tab.

Note: In this example, the color of the label was set to match the color of the line. The icon was removed by setting its size to 0. If you choose to remove the icon, you may need to adjust the placement of the label after you have clicked **OK** in the **Properties** box. To adjust the placement of the label:

- Right click on the label name in the **Places** panel and select **Properties** from the menu.
- Increase the size of the icon to activate the drag and drop feature.
- Move the icon to the new location.
- Set the size of the icon back to 0, and press **OK**.

You may need to do this several times before you are satisfied with the location of the label.

- Repeat the process for each label you would like to add.

