

The GIS 4 Montana initiative is a State-wide K-12 license for ArcGIS, made available free of charge to Montana’s public schools through an agreement between SpatialSci, The University of Montana – Department of Curriculum and Instruction, GeoEssentials, Upper Midwest Aerospace Consortium/Montana EdPARC, Montana Association of Geographic Information Professionals, and ESRI. Every K-12 public school in the state of Montana has the option to capitalize on this program that includes the latest ESRI GIS software.

Before you begin

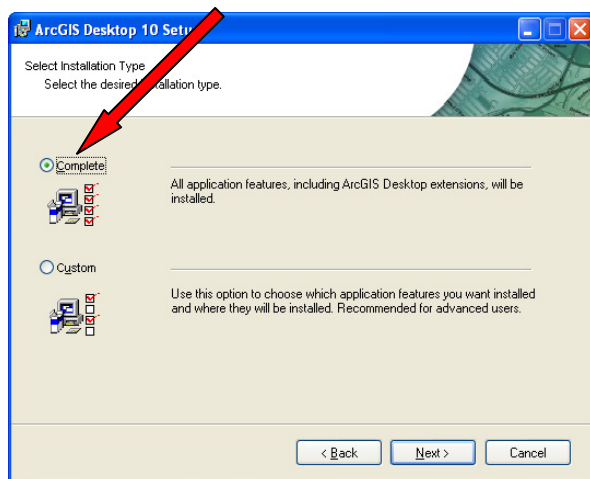
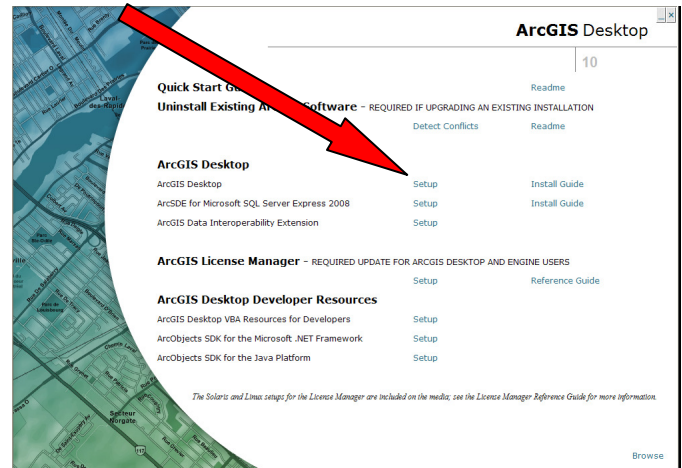
The ArcGIS 10.X software is easy to install if you follow the steps listed below. Everything you need is on the DVD, including the Activation file.

The DVD is designed to AutoRun once you insert it into the DVD drive. As the DVD spins up a screen like the one to the right should appear. A list appears giving you the option to install many different components of the ArcGIS software. The ArcGIS Desktop Setup option is the option you should choose. This will install the complete ArcGIS program (after you install the ArcGIS ArcView program you can always come back to this menu and install other components of the software (this window will stay open after the software is installed so you can come back to it after the ArcGIS install).

GIS 4 Montana ArcGIS 10



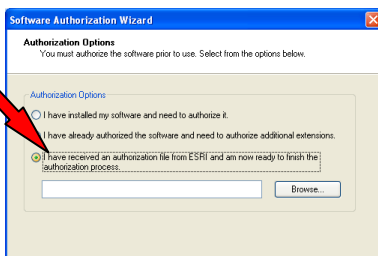
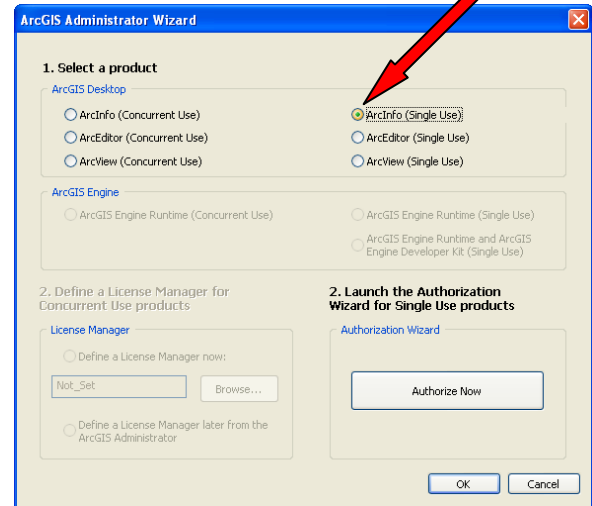
Once you click on the ArcGIS ArcView option, a new window will appear asking you to choose between a complete or custom install (see image below). Unless you are trying to install specific elements of the



program we recommend selecting the “Complete” option. By selecting this option all of the software components needed to run the software will be copied to the hard drive of the computer. This option provides the best configuration for running the software without issue. Once you click on the Complete option a series of pop windows will appear asking you to accept the agreement, along with other information about where to copy the files

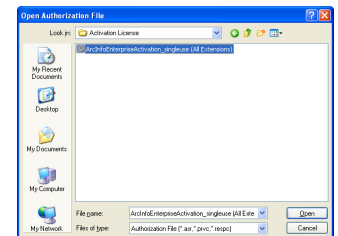
and such. We recommend sticking with the default locations identified by ESRI. This will assure fewer problems when running the program. The file copying process could take several minutes depending on your computer speed. Be sure the software install process is complete before running other apps on the system. A new window should appear once the install is finished indicating the installation was successful; click finish.

At the end of the install a new window will appear, the "ArcGIS Administrator Wizard." The software will not run until it is properly registered. Click on the "ArcInfo (Single Use) radio button. Click "Authorize Now" and you will be taken to another screen. At the next window select "I have received an authorization file from ESRI and I am now ready to finish the authorization process."

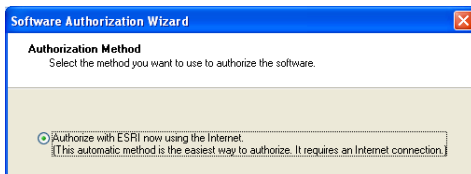


asked to locate the activation file. This file has been copied to the DVD into a folder named "Activation License."

Click next and you will be asked to locate the activation file. This file has been copied to the DVD into a folder named "Activation License." Click on the "Browse" button and navigate to the folder on the DVD, open the Activation License Folder and select the "ArcInfoEnterpriseActivation_singleuse (All Extensions) file. This should be the only file in the folder. Click "Open" and you will be taken back to the previous window. Click next and a new window appears asking you to select your authorization method. Click on the "Authorize with ESRI now using the Internet" option and then click next.



The next two screens require you to add your contact information. Add the necessary information and click next to proceed on. If you completed the earlier



steps correctly, the software authorization number should be filled in already (if not go back to the previous steps to make sure you have selected the authorization file from the DVD drive. These authorization numbers are required to run the software and all

included extensions. Click through the two windows and you will see a progress bar showing the status of the authorization process. Once it has completed, you will be able to use your software.

Happy GIS'ing.

If you have other installation questions, please contact Jeff Crews at jeff@spatialsci.com.

